

Movement that inspires

At Kia, we believe movement inspires ideas. Great ideas come to you when you're on the move. Whether you're walking, traveling on a train or driving. It's why we create the spaces and the time you need to bring ideas to life.

※ All information, illustrations and specifications are accurate at the time of printing and are subject to change without notice. The models and specifications shown in this brochure may vary from those available in your market. Contact your local Kia dealer for current information and full warranty details including terms and conditions.

2310-JNS-GE-LHD



Movement that inspires



بن هندی للسيارات

BIN HINDI MOTORS

A PASSION FOR CARS

Al Eker : 1770 2000
Salhiya : 1740 8800
Fleet Enquiries : 3367 0065

Time: 8.30 am - 7.30 pm (Friday Off).

✉ kiasales@binhindi.com 📞 kiabahrain.com

📺 📷 📱 📞 KiaBahrain 📞 17 702 000

The new Picanto



Movement that inspires





Big on the important things.

The new Picanto artfully combines compact dimensions and an oversized sense of fun and practicality. Reliable, surprisingly spacious, and engineered to master the daily drive, the stylish Picanto is a match for anyone who dreams big.







The futuristic Picanto GT-Line aesthetic reveals a bold spirit starting with its assertive mask design that features an expanded grille and a beefy, body-colored bumper. The high-tech look extends to the rear, with stylish lamps and trim as well as a diffuser panel below the rear bumper.





State-of-the-art tech. Simply presented.

New ultra-modern interior decor touches add sophistication, with simple, centralized controls offering intuitive operation. A new 4.2" color cluster LCD is easier to read. Just as helpful and convenient are the digital key, wireless charging and mobile-paired audio. Face whatever's next on your hectic schedule with grace and confidence.





View and select audio settings using a vivid 8" floating color LCD touchscreen that also displays rearview camera images. The large screen means it's easier to make selections on the go, while you can even personalize the display layout.



Bluetooth handsfree

Built-in Bluetooth® connects paired, compatible mobile devices seamlessly, giving you easy access to music streaming and hands-free calls.



Front-tray USB charger

A conveniently located USB charger gives the driver and passengers quick access, letting them charge compatible smartphones, tablets and gaming equipment.



Rear-seat USB charger

Just beneath the air vents for the rear passengers, a USB-C port provides simple access for passengers who wish to charge their compatible electronic devices.

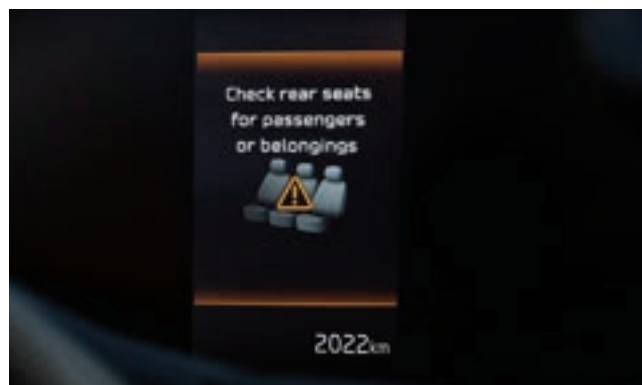


Space for everyone in the Picanto is maximized - front and rear - with ample room to stretch and relax on firm, supportive seats.



Ventilated driver's seat

Ventilation fans integrated into the seat create a more comfortable driving experience.



Rear Occupant Alert (ROA)

To make sure no one is left alone, ROA warns you of any rear occupants still in the vehicle when you stop and prepare to exit.



Every day the Picanto reveals new possibilities. Flexibility is an essential part of its development concept. One day it's all passengers. Another day, you're moving cargo, or a mix of people and cargo. Handle the unexpected with calmness and finesse.



Passenger-side seatback pocket

A pocket behind the passenger seat seatback can hold a variety of small items for greater storage convenience.



Center console armrest

The floor-mounted center console offers a handy storage space, while the armrest at the top provides soft yet sturdy support for longer drives.



60:40 split folding rear seats

The rear seatbacks are split 60:40 and fold flat, giving you numerous options for how to best to accommodate people and cargo.



Dual-level luggage board

The cargo area floorboard mounts flush with the folded seatbacks and conceals a handy space below to securely store items out of view.



Effortless agility. Remarkable range.

With an engine that draws on a long legacy of world-class engineering, the Picanto offers quick, responsive power as well as enviable fuel economy. Day in and day out, it's tuned to handle the bumps and tight corners of city driving, as well as the smooth surface of open highways.



Your guardian working behind the scenes.

The best help is often the kind you don't even notice. Always observing, sensing, and stepping in when needed, Kia's DRIVE WiSE applies the latest Advanced Driver Assistance System (ADAS) technologies to help keep you alert, safe and in control. It's doing its part to make the world safer for both vehicle occupants and pedestrians.



Rear Cross-Traffic Collision-Avoidance Assist (RCCA)

RCCA provides a warning when reversing into a lane and there is a risk of collision with a vehicle approaching from the left or right side. If the risk of collision increases after the warning, the system automatically assists with emergency braking.



Blind-Spot Collision-Avoidance Assist (BCA)

When engaging the turn signal to change lanes, BCA provides a warning if it detects a risk of collision with a rear side vehicle. If a vehicle appears to be approaching from the rear when exiting a parallel parking spot, BCA automatically assists with emergency braking.



Parking Distance Warning (PDW)

To help you park safely and confidently, PDW uses ultrasonic sensors mounted on the rear bumpers to warn of any obstacles, helping you to position the wheels properly when maneuvering into tight spaces.



Base model

The best future is the one you choose.

Picanto is an urban mobility hero that delivers comfort, efficiency and driving pleasure. The base model expresses a bold and future-oriented persona, while the GT-Line embodies sporty sophistication with more aggressive design elements. Choose the one that best suits your city lifestyle.



GT-Line

Choose your style.



Full LED headlamps



Projection headlamps



Rear LED fog lamps



LED rear lamps



Bulb rear lamps



Electric outside mirrors



Sunroof



High-mounted stop lamp



Body-color outside handles



Supervision cluster
(4.2-inch color TFT LCD)



Monochrome cluster



Manual temperature control



Audio remote controls



Sun visor illumination lamps



Auto light control



Smart key



Heated front seats

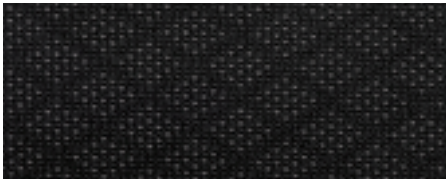


Metallic pedals

Choose your interior.



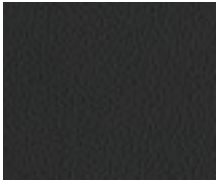
Black



Cloth



Black High-gloss Package



Artificial leather



Adventurous Green Package



Artificial leather



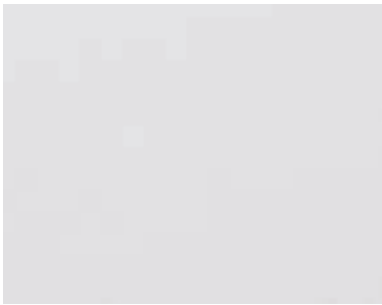
Rich Brown Package



Artificial leather

Choose your exterior.

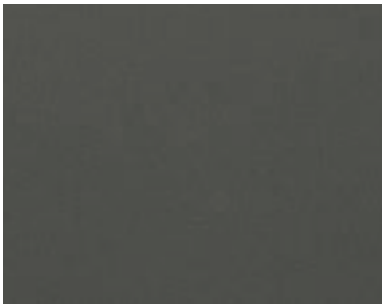
Exterior Body Colors



Clear White (UD)



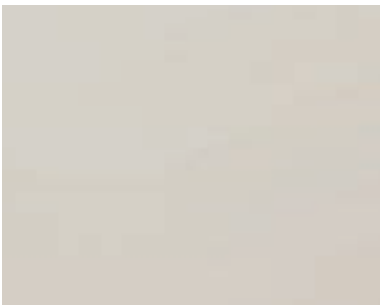
Sparkling Silver (KCS)



Astro Gray (M7G)



Aurora Black Pearl (ABP)



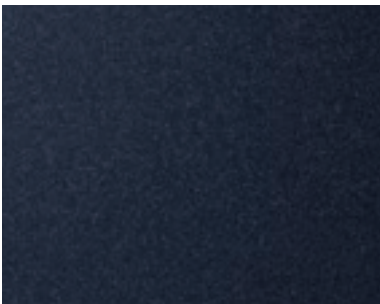
Milky Beige (M9Y)



Signal Red (BEG)



Sporty Blue (SPB)



Smoke Blue (EU3)



Adventurous Green (A2G)

Wheels



14" wheel cover



14" alloy wheel



15" alloy wheel

Dimensions (mm)

Head room (1st/2nd row)	1,005 / 960
Leg room (1st/2nd row)	1,085 / 820
Shoulder room (1st/2nd row)	1,300 / 1,280
Minimum ground clearance	151
Luggage (VDA)	255

Base model



GT-Line

